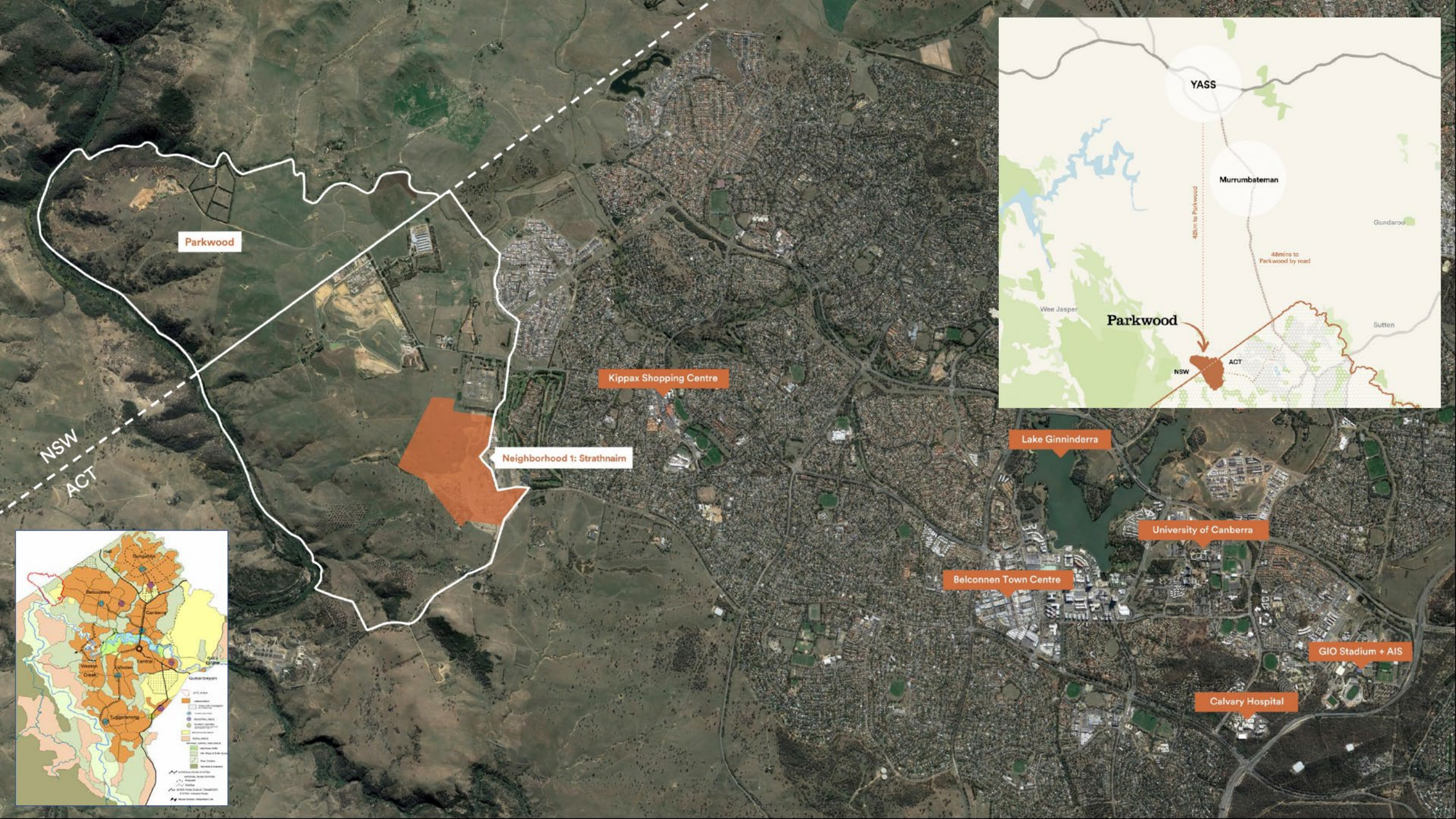




**Ginninderry  
Conservation Trust**

# The Ginninderry Conservation Trust





Parkwood

Kippax Shopping Centre

Neighborhood 1: Strathnairn

Lake Ginninderra

University of Canberra

Belconnen Town Centre

GIO Stadium + AIS

Calvary Hospital



YASS

Murrumbateman

Parkwood

42km to Parkwood

48mins to Parkwood by road

NSW  
ACT

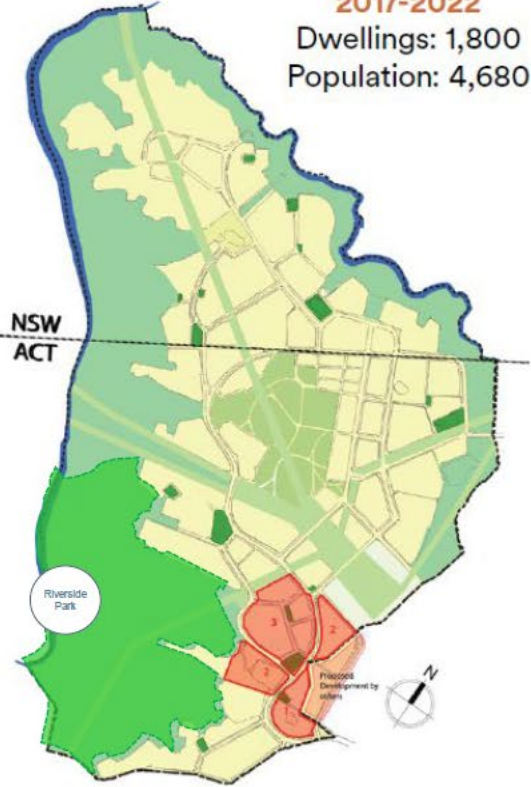




# Conservation Corridor Staging

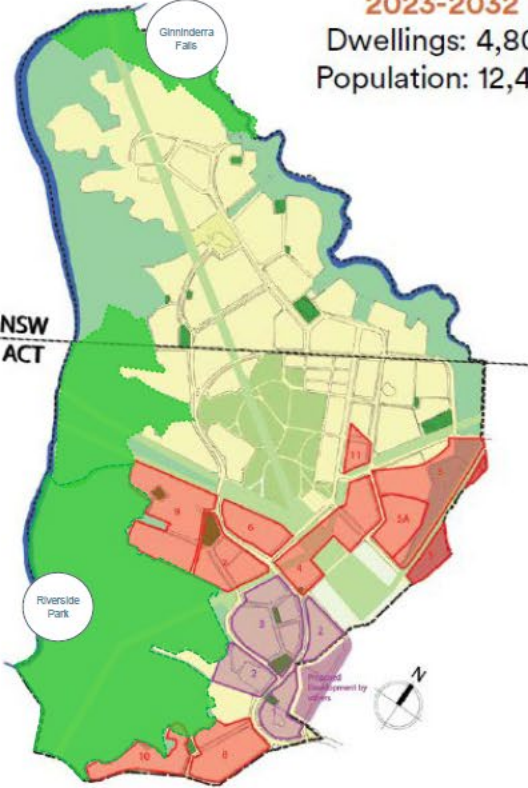
**2017-2022**

Dwellings: 1,800  
Population: 4,680



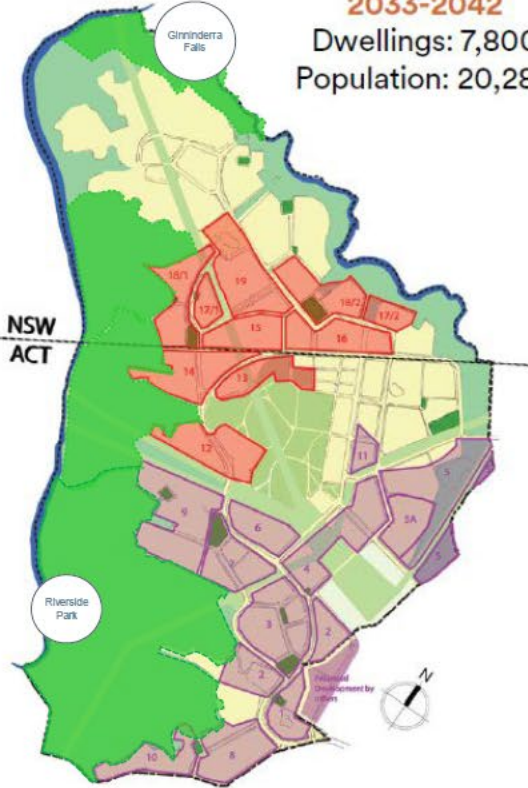
**2023-2032**

Dwellings: 4,800  
Population: 12,480



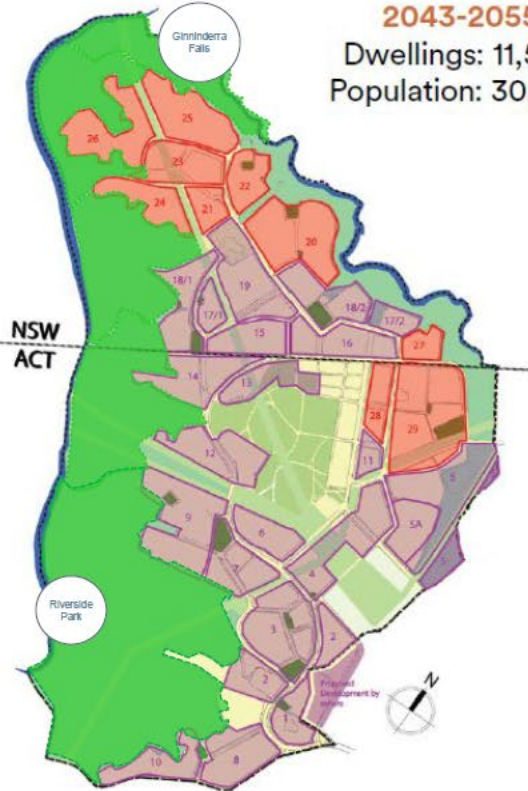
**2033-2042**

Dwellings: 7,800  
Population: 20,280



**2043-2055**

Dwellings: 11,500  
Population: 30,000



● In development    ● Completed/developed

NSW subject to landowner agreement

# Meet the Team



**CEO: Jason Cummings**



**Program Director:  
Ange Calliess**



**Project Officer: Tyson  
Powell**



**Rehabilitation & Reporting  
Officer: Rachel Eland**



**Riparian Restoration  
and Education Officer:  
Bridie Noble**



**Casual Ranger:  
Violet Marriott**



**Casual Ranger:  
Kieran Webbie**



**Casual Ranger:  
Ariana Strmota**



**Casual Ranger:  
Alex Nguyen**

**Caring for Country  
Trainees:**








Kye Moggridge

Leigh Woodward

# Walking Tracks

## OVERVIEW

The app content for this trail will consist of 12 audio stops, plus two welcome stops (repeated at each end of the trail). We propose a suite of interpretative and wayfinding signage designed with consideration of the landscape and the wider Ginninderry brand guidelines.

-  2 × Orientation signs
-  13 × Small interp/audio markers  
1 × small interp marker  
12 × small interp/audio markers
-  13 × Audio stops  
1 × welcome (repeated at either end)  
12 × regular
-  4-8 × Wayfinding markers
-  1 × Panoramic sign  
Similar to Mulligans
-  1 × Sculptural sign
-  Gruner's vista  
Spatial & interp design



**Gruner's Vista**

The painting  
Mulligans, Callitris (1987)

Mark Gruner

This landscape

# Research with ANU

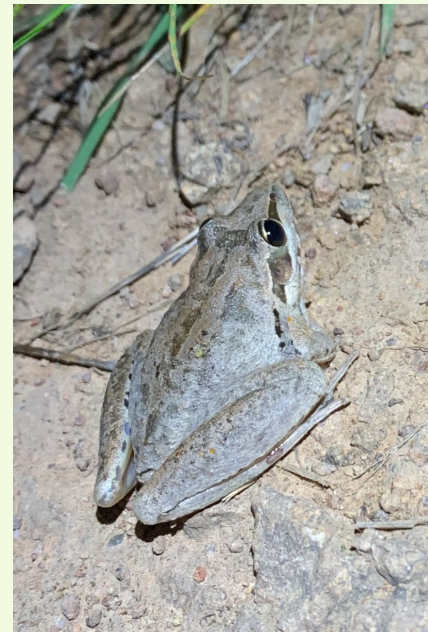
- Fox deterrence project – paused until next year.
- GSM habitat monitoring and translocation program (ANU) – early stages.
- PTWL genetics research (ANU Masters student).
- Eastern Brown Snake tracking project.



# Monitoring



- Scrape and sow restoration site – Deferred.
- Pale Pomaderris surveys – Complete.
- Biomass monitoring – every autumn and spring.
- St John's Wort spray sites – Complete.
- Frogwatch – Complete.
- Kangaroo counts – Scheduled for December.
- Goodamon Creek (stream E) bench and pool vegetation monitoring.
- PTWL population surveys.
- Waterwatch – Murrumbidgee and Ginninderra Falls – Scheduled.
- Superb Parrot habitat surveying on school site – Complete.



# Projects Underway

- Eastern Long-neck Turtle translocations - from the dams in Macnamara construction zone to dams within the Corridor. Collaborative project between the Trust, Huon and the development team.
- Dam restoration project – 2 dams are being fenced off to exclude cattle. 1 will have a hardened access point. Planting to be undertaken.
- E-DNA monitoring of dams, Goodamon Creek and Murrumbidgee River.
- Murrumbidgee riparian planting.
- Water quality testing by UC.







# Events/ Community Engagement

- Treecreative 'Walkshop' – Meditative walk
- Bird Walk with Chris Davey (GOG) – 27<sup>th</sup> November
- Weaving workshop.
- My Place school holiday program – September.
- Kingsford Smith Kindy Kids day.



# Projects: Next 6–12 months

- Willow/ Box elder control.
- Blackberry control.
- Weeding high priority areas.
- Constructions of nursery.
- Construction of new walking tracks.
- Rosenberg Goanna surveying.
- Continuation of monitoring program including; PTWL, Biomass, Streams and dams, Scrape and Sow.
- Continuation of research prospectus with ANU.

