



# Ginninderry Conservation Trust

## Annual Report 2019-2020

**Ginninderry Conservation Trust**

**November 2020**

### **Key Contact**

CEO – Ginninderry Conservation Trust

1 McClymont Way

Strathnairn ACT 2615

[admin.contact@ginninderry.org](mailto:admin.contact@ginninderry.org)

### **Chair's Introduction**

I would like to welcome members to this first AGM of the Ginninderry Conservation Trust. I was very pleased to be elected Chair of the Board of the Trust late last year.

A major reason I was interested to be involved is that I consider this to be an important and relatively unusual initiative in association with a housing development in the ACT and the adjoining area of NSW. I am impressed at the coming together and the commitment of the Joint Venture, the ACT Government and the Yass Valley Council to put in place this Murrumbidgee/Ginninderra Creek Conservation Corridor.

Over the past year there has been a lot of work put in, especially in relation to Stage 1 (Riverside Park) of the corridor. This is in the ACT and can be seen clearly from Shepherd's lookout, off Stockdill Drive. The Trust now has control of this area. Much preliminary work has been done on the flora and fauna and necessary preservation and environmental restoration. Water management and bushfire prevention have also been a major focus and the Trust is starting to progressively introduce the necessary measures. There has also been close and ongoing collaboration with the Aboriginal groups and much effort is being put into site preservation and identification of information for visitors about Aboriginal culture relevant to this area.

Riverside Park is the priority for development at this stage and is where we are working towards a major visitor facility once development approval is finalised. We have also been assessing the situation with Stage 2c (Ginninderra Falls and Ginninderra Creek down to the Murrumbidgee), which we see as allowing renewed public access and active restoration and preservation of the cultural and environmental values in this area. Necessary negotiations are underway through the Joint Venture.

I must pay compliments to Jason Cummings (the CEO of the Trust) and David Maxwell from the Joint Venture for their productive input to the establishment and operations of the Trust Board. The other members of the Board have all given their time and expertise voluntarily and I thank them most sincerely.

I am impressed that real progress has been made and I look forward to important aspects of the Trust being put in place over the coming year.

David Coutts

## Contents

<b>1. Introduction</b> .....	5
<b>2. Progress and Outcomes</b> .....	5
<b>2.1 Capacity Development</b> .....	14
<b>2.1.1 Board and Governance</b> .....	14
<b>2.1.2 Staffing and Partnerships</b> .....	14
<b>2.1.3 Financial Statements</b> .....	15
<b>2.1.4 Performance Management and Reporting</b> .....	15
<b>3. Case Studies</b> .....	16
<b>3.1.1 Pink-tail Worm-lizard Habitat Expansion</b> .....	16
<b>3.1.2 Community Engagement</b>	17

## List of abbreviations

Abbreviation	Definition
ACT	Australian Capital Territory
AMS	Adaptive Management Strategy
ARI	Average Recurrence Interval
BAM	Biobanking Assessment Measures
BGW or Box-Gum Woodland	White Box – Yellow Box – Blakely’s Red Gum Grassy Woodland and Derived Native Grassland
BoB	Bush on the Boundary (community group)
CEMP	Construction Environment Management Plan (interchangeable with EMP)
CMTEDD	Chief Minister, Treasury and Economic Development Directorate
DA	Development approval
DoEE	Department of the Environment and Energy
EIA	Environmental Impact Assessment
EDP	Estate Development Plan
EPBC Act	<i>Environment Protection and Biodiversity Conservation Act 1999</i> (Cwth)
EPSDD	Environment, Planning and Sustainable Development Directorate (formerly the Environment and Planning Directorate)
ESA	Emergency Services Agency
GAAG	Ginninderry Aboriginal Advisory Group
GCT	Ginninderry Conservation Trust
GCTMP	Ginninderry Conservation Trust Management Plan
GPT	Gross Pollutant Trap
LEP	Local Environmental Plan
MNES	Matters of National Environmental Significance
N1	Neighbourhood 1
N2	Neighbourhood 2
NES Plan	Molonglo Valley Plan for the Protection of Matters of National Environmental Significance
NSW	New South Wales
NTG or Natural Temperate Grassland	Natural Temperate Grassland of the Southern Tablelands of NSW and the ACT
PCS	Parks and Conservation Services
PDF	Planning and Design Framework
PTWL	Pink-Tailed Worm Lizard ( <i>Aprasia parapulchella</i> )
RAO	Registered Aboriginal Organisation
SLA	Suburban Land Agency (Established 1 July 2017)
TCCS	Transport Canberra and City Services
WSUP	Water Sensitive Urban Design

## 1. Introduction

The Ginninderry Conservation Trust (GCT) has been developed as a strategic initiative of the Ginninderry Joint Venture (the JV), as a vehicle to manage the Ginninderry Conservation Corridor (the Corridor), deliver Environment Protection and Biodiversity Conservation Act (EPBC) commitments, harness community support for landscape management, and present a contemporary leading practice conservation space.

The Trust legal entity has been established with a guiding constitution under the Australian Corporations Act (2001) and has been registered with the Australian Charities and Not-for-profits Commission and has a tax-deductible gift recipient fund.

The Trust's on-ground operations are guided by a Plan of Management for the Corridor (2018-2023) which has been prepared pursuant to the requirements of the Environment Protection and Biodiversity Conservation (EPBC) Act approval for the Ginninderry Project, and endorsed by the ACT Conservator and Minister for the Environment (approved in 2018).

The EPBC Act approval for the Ginninderry [formerly West Belconnen] urban development program includes a raft of commitments to protect, enhance and offset the natural values in the locality. These commitments are largely implemented in 3 areas: the Ginninderry Conservation Corridor, the Ginninderry Urban Area, and the Gooromon Grasslands. The vast bulk of on-ground protection and enhancement works occur in the Ginninderry Conservation Corridor, guided by an approved Plan of Management, and delivered by the Ginninderry Conservation Trust, hence the emphasis on those works in this report.

The purpose of this report is to document and share the progress over the period of FY19/20 against 7 key program areas:

1. Weed, kangaroo, grazing and habitat management and restoration.
2. Bushfire mitigation to protect ecological values.
3. Establishment of recreational facilities and access trails for the community.
4. Protection of Indigenous heritage through annual maintenance and reporting of heritage sites.
5. Developing and providing information and communication on matters such as cat containment.
6. Developing a volunteer engagement program for areas such as monitoring Pink-Tailed Worm Lizard.
7. Undertaking research related to EPBC Act commitments such as box gum woodland restoration.

## 2. Progress and Outcomes

During the financial year the Trust initiated its operations, including the establishment of corporate governance frameworks and people (i.e. the Board), staffing, project partnerships and initiation of on-ground conservation works.

The ACT Government has issued a Section 303 license covering 240 ha (Figure 1), of the Conservation Corridor for the purposes of implementing the Corridor Plan of Management. GCT entered into a Section 303 Licence, 12 March 2020 and is currently responsible for approximately 1.5 km of Murrumbidgee River frontage.

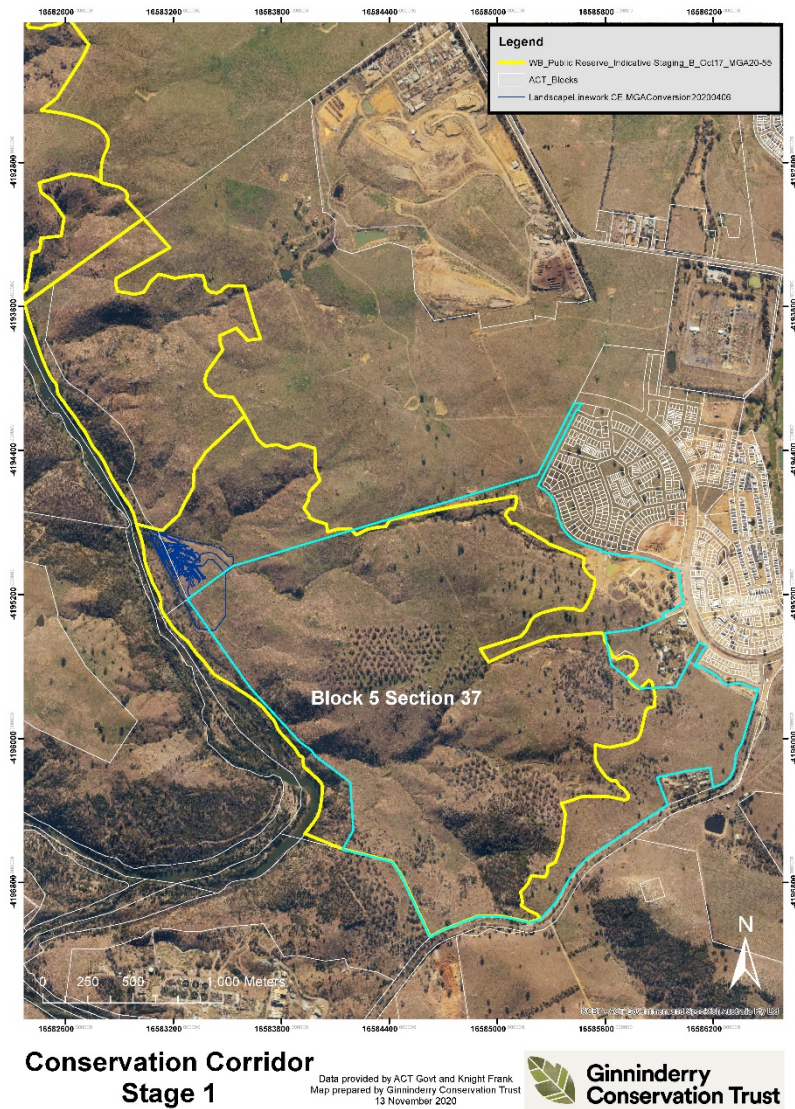


Figure 1 Stage 1 (blue) of the Corridor adjacent to the urban area and the Murrumbidgee River

The proposed priority actions (extracted from the Plan of Management) for the first two years of operation have been listed in Table 1 below. These priorities have been endorsed by the Board of the Trust which includes representation from; ACT Government, the Ginninderry Joint Venture, Yass Valley Council and the Ginninderry Aboriginal Advisory Group. The table includes an assessment regarding the status of progress implementing each priority action, with further details provided later in the report.

**Table 1: Key responsibilities and activities 2019-2022 from the Plan of Management and report of activities taken during the year.**

Program Area	Plan of Management Strategy Reference & Action	Outcome	Activities undertaken July 1 2019 – June 30 2020
<b>Aboriginal Heritage</b>	<p>4.2.1 Aboriginal heritage</p> <p>Develop and implement a protection strategy based on input from GAAG</p>	<p>Preservation of cultural sites, educating GCT team, residents, volunteers and visitors regards cultural significance across the GCT area.</p>	<p>The Ginninderry Aboriginal Advisory Group (GAAG) has been established, and since November 2019 have had active and positive representation on the Conservation Trust Board. An Aboriginal Cultural Values Assessment was undertaken in 2017 and sights of significance have been identified and a Heritage and Cultural Values Management Plan is being developed to protect them.</p> <p>Although just outside the reporting period, one relocated Scar tree was inspected on 7 July 2020. No intervention is deemed warranted at this point in time. The tree will be checked intermittently as part of normal Corridor management and maintenance checks with formal follow up monitoring to be undertaken in July 2021.</p> <p>Registered Aboriginal Organisations and the GAAG have been engaged to advise on Corridor management and participate in Corridor decision making and have been providing advice on the plans for Riverside Park. The Trust, with the support of the GAAG, has recruited an Aboriginal Project Officer. A Conservation Management Plan for Aboriginal sites and objects has been drafted.</p>
<b>Aboriginal Heritage</b>	<p>4.2.1 Aboriginal heritage</p> <p>Undertake cultural tours subject to input from GAAG</p>	<p>Increased cultural respect amongst stakeholders.</p>	<p>The establishment of GAAG representation on the board and appointment of a Aboriginal Project Officer are the first steps to deliver the establishment of cultural tours in the Corridor.</p>
<b>Bushfire Mitigation</b>	<p>4.1.4 Fire management</p> <p>Review Bushfire Management Plan and implement actions.</p>	<p>Implementation of Bushfire Management Plan and collaboration with ACT Parks and Conservation Service for Fire Fuel Management Actions (or other special operations).</p>	<p>Eco Logical Australia have drafted the Bushfire Management Plan which has been reviewed by ACT Parks and Conservation and the Rural Fire Service. Engagement with the consultants, and agencies has been undertaken and plans are being refined to commence implementation of operations and mitigation measures in coming years. Strategic cattle grazing continues to maintain and limit bushfire fuel loads and protect grassy habitats.</p>

<b>Bushfire Mitigation</b>	4.1.4 Fire management  Fire trail establishment/upgrade (assumed BMP action)	Established network of fire trails across the Conservation Corridor.	The implementation of fire trails has yet to commence but will be implemented in accordance with the Bushfire Management Plan once endorsed.
<b>Bushfire Mitigation</b>	4.1.5 Grazing as a management tool  Strategic grazing for both fire fuel and weed management.	Managed biomass within the Conservation Corridor.	Grazing was enacted as the primary biomass management tool to mitigate bushfire risk in the Corridor throughout the year. During the reporting period up to 80 cattle were grazed in the corridor at any one time, with fences maintained to manage them accordingly. A trough/tank has been secured to facilitate more strategic grazing of Little Eagle paddock, its installation will require a cultural heritage survey before any disturbance of soil will occur to settle both structures in.
<b>Communications</b>	4.1.6 Cat containment is required under the EPBC Act approval.  Deliver information on cat containment via Facebook, community newsletter, as part of tours and events, and opportunistically.	Cat containment in place.	A cat containment policy had been imposed for the suburbs of Strathnairn and Macnamara. Signage has been implemented around the suburbs. Engagement programs with the community (e.g. social media) have highlighted the natural values of the corridor and locality to grow awareness of these values to support broad adoption of cat containment measures.
<b>Communications</b>	4.2.2 European Heritage  Consultation with the ACT Heritage Council, the managers of the Belconnen Farm heritage precinct, the Strathnairn Arts Association, Yass Valley Council, local grazing families and the community.	European heritage in the Corridor will be managed and interpreted in an appropriate manner to show its importance in the land use history and community connections to the Corridor area.	A Cultural Heritage Management Plan has been drafted and advice is being sought from key stakeholders.
<b>Communications</b>	4.5.1 Community stewardship  Develop a Communications Strategy	Community stewardship of the Corridor via shared information, active learning and volunteer opportunities.	The Trust has established a website and a consistent branding and presence across social media platforms - Facebook, Twitter and Instagram.



<b>Communications</b>	4.5.1 Community stewardship  Regularly update Facebook page with photos and events	Develop a readership/support base amongst residents, local community, and partners.	Facebook and Instagram are regularly updated with good engagement from followers. Follow-ship is growing with new residents to the area particularly engaged with the platforms.
<b>Habitat Restoration</b>	4.1.1 Ecological restoration and biodiversity management  Develop, prioritise and deliver actions identified in Work Plan and Conservation Corridor Management Plan and Offset Management Plan.	EPBC an ACT Govt Milestones delivered on time-on budget.	Annual reporting to regulatory agencies was completed.
<b>Habitat Restoration</b>	4.1.1 Ecological restoration and biodiversity management  Fencing - Conservation Corridor (rationalised boundary) starting with realigned Arts Centre land boundary.	Rationalised and defined Conservation Corridor management land.	A works plan has been prepared and reviewed by the Board. Two patches of BGW have been identified on Block 5 Section 35 Strathnairn to be incorporated into the corridor. Further adjustments to the fencing and boundaries of the corridor will be implemented as the adjacent urban area develops and the interface area design is resolved.
<b>Habitat Restoration</b>	4.1.1 Ecological restoration and biodiversity management  Stream E - Monitor effectiveness of Stream E works in both the development footprint and the Conservation Corridor	Improved water quality and bank stability, reduced nutrient and sediment inputs in to Stream E and Murrumbidgee River.	Water monitoring is being undertaken regularly by University of Canberra, and we have engaged consultants to monitor Stream E vegetation to document any changes that could be attributable to urban development, stock grazing or stream rehabilitation works. .
<b>Habitat Restoration</b>	4.1.2 Weed management  Review and update Weed Management Plan (Butler 2014) and undertake integrated weed management actions in line with revised plan.	Integrated and targeted weed management strategy.	During the reporting period we initiated the update of the Weed Management Plan. The updated plan will be a spatial plan that is dynamic and easily reviewed for reporting purposes. Weed surveying has commenced as part of the above with Survey123 and ArcGIS Online being utilised.

<b>Habitat Restoration</b>	4.1.2 Weed management  African Love Grass integrated management trial - planting stage.	ALG management trial.	Weeds are being controlled in priority areas. A grazing trial was initiated along section of Murrumbidgee River riparian zone to tackle African Love Grass (ALG) infestation – to date grazing and spot spraying has been undertaken with planting of native species initiated to shade out ALG growth.
<b>Habitat Restoration</b>	4.1.3 Pest animal management  Monitoring of kangaroo and feral animal activity - deer, fox, rabbit and hare to determine control measures on as needs basis in collaboration with neighbouring land managers.	Evidence of presence/impact for future planning and potential collaboration with ACT Parks and Conservation Service and neighbouring landowners.	A partnership for a peninsula-wide monitoring of kangaroos has been initiated and is currently in discussion with ACT Government to establish the best cross-tenure approach to kangaroo management.  A service-level-agreement with the Parks and Conservation Service is a work in progress for the cross-tenure management of feral animals.
<b>Habitat Restoration</b>	4.5.2 Partnerships  Develop and manage partnerships with local not-for-profit groups (GCG, ANPS, Frogwatch, WWT, CIT, Spark, UC, FOG), ACT Govt agencies including Parks and ACT NRM.	Strong partnerships to support and facilitate delivery of milestones.	GCT Staff and Board Members have been engaging with the Bush on the Boundary forum (including Ginninderra Catchment Group, Cons Council, Friends of Grasslands, Ginninderra Falls Association, Suburban Land Agency) – monthly and throughout the year.  Friends of Grasslands have been engaged to undertake monitoring of a grassland/Pink-Tail Worm-Lizard (PTWL) habitat restoration site, and Canberra Ornithologists Group have been engaged for woodland bird monitoring in the Corridor and at Ginninderra Falls.
<b>Habitat Restoration</b>	5.1.1 Managed threats to PTWL habitat  Weed control to maintain native grassland species.	Maintain/improve PTWL habitat quality.	Native grasslands were re-mapped during the reporting period by Capital Ecology and weed control measures will be implemented as part of the updated Weed Management Plan.
<b>Habitat Restoration</b>	5.1.1 Managed threats to PTWL habitat  PTWL expansion/ connectivity. Adding rock to areas of native grassland to expand existing PTWL habitat and improve connectivity between habitats.	Extend PTWL habitat and improve connectivity.	During the reporting period Greening Australia and fencing contractor were engaged to implement a scrape and sow restoration site. The scrape and sow removed exotic grasses to create Natural Temperate Grassland (NTG) and PTWL habitat totalling 0.27Ha. Rocks are currently being sourced and discussions with CIT are being undertaken to engage students to put out rock.

<b>Habitat Restoration</b>	5.1.1 Managed threats to PTWL habitat  Monitoring of PTWL habitat and PTWL habitat expansion sites.	Determine level of success over a period of years and review cost/benefit of works.	The grassland scrape and sow demonstration site has been established. The scrape and sow removed exotic grasses to create NTG and PTWL habitat totalling 0.27Ha. Rock has been added to the site to encourage PTWL habitat. Bricks and logs are also being sourced to test whether PTWL's will use them as habitat.  The first PTWL monitoring was planned during the reporting period for implementation in Spring 2020 (initiated at the time of writing).
<b>Habitat Restoration</b>	Managed threats to PTWL habitat	Maintain/improve PTWL habitat quality.	Controlled grazing is being undertaken, and weed control will be implemented in accordance with the Weed Management Plan being developed per the above-report.
<b>Habitat Restoration</b>	Natural Temperate Grassland	Maintain/extend areas of NTG.	The Offset Management Plan identified restoration opportunities that could be implemented to create new habitat or improve existing habitat. GCT identified 0.27Ha of exotic pasture which could be rehabilitated for high intensity habitat creation and to extend NTG. A scrape and sow demonstration was implemented in the Corridor in May 2020 and a selection of native grasses and forb seeds were sown. Friends of the Grasslands (FOG) has been engaged to monitor the site and Greening Australia have been contracted to undergo weeding of the site for a period of two years.
<b>Habitat Restoration</b>	Box-Gum Woodland	Maintain/extend areas of BGW.	A works plan has been prepared and reviewed by the Board. The next BGW monitoring was scheduled and contracted during the reporting period and will be undertaken in Spring/Summer 2020.
<b>Habitat Restoration</b>	Vegetation Condition Monitoring Framework	Monitoring framework to support and inform Management Plan outcomes.	The Ginninderry Conservation Corridor Ecological Monitoring Framework has been drafted by Umwelt (2020) and feedback has been received from the ACT Government ecologists and BoB community. Final amendments are being undertaken by consultant.
<b>Recreation Management</b>	Protection and enhancement of scenic landscapes	The Corridor's natural landscape and scenic vistas will be protected and enhanced to foster community appreciation of the Corridor and its setting and contribute to the distinctive landscape identity of Canberra and the Murrumbidgee River	Ongoing. Activities being undertaken in line with the Plan of Management, with the Trust actively involved in the design and development of recreational facilities that foster nature appreciation and protect sensitive areas by their development, design and layout.

		Corridor.	
<b>Recreation Management</b>	Recreational Trails and Networks	Recreation opportunities will be developed and managed in a way that both protects and showcases the nationally significant habitat, ecosystems, scenic landscapes and other natural and cultural heritage in the Corridor.	Works on the Link to Shepherds Lookout trail and Lookout upgrades have been initiated. GCT has had ongoing engagement and input regarding the development of the trails.
<b>Research</b>	Partnerships	Research opportunities identified and partnerships developed to implement.	We supported the development of a Research Prospectus through Fenner School at Australian National University. This research prospectus canvassed research opportunities that can help deliver the aspirations of the Trust and the Corridor as a place of outstanding research. Fields of research endeavour being explored include Golden Sun Moth translocations, PTWL translocations, the effects of different grazing animals on vegetation communities, society's willingness to pay for conservation actions, and socio-ecological elements of human-wildlife interactions.
<b>Volunteers</b>	Community stewardship	Develop a support base amongst residents and local community that will take stewardship over the Corridor in the future and support management.	GCT has initiated a community engagement program, activities developed during the reporting period include: <ul style="list-style-type: none"> <li>- A series of events called A 'Month of Wildlife' including bird walks, frogs/turtle monitoring and water monitoring</li> <li>- NAIDOC week activities in final planning stages. We have progressed discussions with local Aboriginal enterprises to deliver activities as part of Belconnen Arts 'NAIDOC in the North' event.</li> <li>- SPARK Horticulture/Conservation and Land Management students have utilised the Corridor for field work components.</li> <li>- Local botanical artist Sharon Field was engaged to develop art/environment programs for kids and adults.</li> </ul>

			<ul style="list-style-type: none"><li>- A bush tucker garden has been established at the Link premisses with signage.</li><li>- Signage to prohibit 'dogs off leash' have been placed around the corridor boundary.</li></ul>
--	--	--	-------------------------------------------------------------------------------------------------------------------------------------------------------------------------------------------------------------------------------

## 2.1 Capacity Development

### 2.1.1 Board and Governance

During the year the Board transitioned from the legal start-up board to the full operating board with the recruitment and appointment of representatives to all available positions:

- |                        |                                          |           |
|------------------------|------------------------------------------|-----------|
| • Mr David Coutts      | Community Representative                 | Chair     |
| • Mr Rod Griffiths     | Community Representative                 | Treasurer |
| • Ms Roz Chivers       | Community Representative                 | Secretary |
| • Mr Alistair Henchman | Community Representative                 |           |
| • Ms Leesa Croke       | ACT Govt Representative                  |           |
| • Ms Jennifer Finlay   | ACT Govt Representative                  |           |
| • Mr Justin Foley      | ACT Govt Representative                  |           |
| • Ms Alice Williams    | Aboriginal Advisory Group Representative |           |
| • Mr Wally Bell        | Aboriginal Advisory Group Representative |           |
| • Ms Jasmin Jones      | Yass Valley Council Representative       |           |
| • Mr David Maxwell     | Ginninderry Joint Venture Representative |           |

As a start-up Board of Directors, the board has had an active work program through the year, including the consideration and development of:

- Key policies (e.g. delegations, workplace health and safety)
- Funding partnerships with the ACT Government and Ginninderry Joint Venture
- Appointment of key personnel (e.g. Chief Executive Officer)
- Development and approval of business plans and budgets
- Financial and accounting reporting frameworks and templates
- Board reporting frameworks (e.g. risk, audit, traffic light operational reporting)
- Familiarisation with the Joint Venture operating environment, local landscape and key stakeholders

### 2.1.2 Staffing and Partnerships

In the interests of balancing efficiency and effectiveness, a combination of employed staff, partnerships, and sub-contracted/purchased services has been engaged. This has enabled quick and efficient development of capacity and recognises and leverages existing skills in partner organisations.

Withing the financial year, the Trust employed staff to the following roles – Chief Executive Officer, River Corridor Programs Director, Reporting and Rehabilitation Officer and Aboriginal Projects Officer. Each of these staff play critical roles in a small team and partnership

environment to deliver the priorities identified by the board (through business planning and budgeting processes) for the implementation of the Plan of Management.

Key partnerships under-development, initiated or agreed during the reporting period, for the implementation of key tasks in the Plan of Management, include with the Australian National University, the ACT Government Parks and Conservation Service, the Friends of Grasslands, the Canberra Ornithologists Group and the Canberra Institute of Technology and the Woodlands and Wetlands Trust.

### **2.1.3 Financial Statements**

The first set of financial statements were developed and audited by Bell Chambers Barrett and are available at Appendix 1.

### **2.1.4 Performance Management and Reporting**

#### ***Financial reporting***

An external financial audit will be undertaken each year, and the audit report will be provided to the Australian Charities and Not-for-profits Commission. Monthly-quarterly financial reports are provided to the Board, with reporting against the approved budget and finer scale program-level reporting as requested.

#### ***Environmental and Community Performance***

This first annual report has been prepared for the Board and stakeholders interested in the Ginninderry Conservation Corridor. Finer-scale reporting also occurs with regulatory authorities and as the program expands the volume of material available for review will also grow.

### 3. Case Studies

#### 3.1.1 Pink-tail Worm-lizard Habitat Expansion

In April 2020 the Trust partnered with Greening Australia to deliver the grassland restoration works.



The rehabilitation technique has been successfully used elsewhere in the region - we scrape 10-15 cm of topsoil from restoration area to remove weed seed; then sow mixed native grasses and forbs directly onto the scrape surface at a rate of 50 kg of seed per hectare before installing jute mesh at 10 m intervals across the contour of the scrape to reduce wash and trap seed.

We then fenced the site to exclude stock and minimise kangaroo

impact, and installed weed mesh on fence to reduce weed seed blow in.

To create habitat for the endangered lizards we then added an extra step – installation of rock, brick and woody debris in sections across the site to encourage ant activity and thereby create the right conditions for lizard inhabitation.



#### Monitoring

Biannual monitoring by Friends of Grassland & the Trust in Autumn and Spring and regular maintenance activities will be implemented. Greening Australia has a two-year maintenance schedule incorporated into their contract and we will also be monitoring the site for weed incursion and signs of any Pinkies!

#### Progress

The early signs are that the scrape and sow technique has been successful. Our first monitoring activity has detected large numbers of native plant species where there were previously none. Ongoing monitoring and maintenance will be required (and perhaps some supplementary plantings), and we will consider further habitat expansion opportunities and other rehabilitation options (e.g. the placement of rock in existing Natural Temperate Grassland areas and weed control and placement of rock in lower condition grassland areas).





### 3.1.2 Community Engagement

The Trust has adopted a strong community engagement ethic and it is a key element of our Management Plan. We have a special focus on the Ginninderry residents (current and future) and all activities are shared with Tulitha King, Ginninderry’s Community Engagement Manager, who posts our activities on the Residents’ FaceBook page as a first priority. It’s great to note that we have had Strathnairn residents engage in recent activities. Below is a summary of community engagement activities the Trust has delivered this year.

#### Bird and Plant Introduction Walks

In April 2020 the Trust engaged Nicki Taws, Greening Australia (GA) to deliver a bird walk for community. 15 people participated and feedback was positive. On Saturday 7th November we held a follow up event with Nicki, including plant identification. Both events included participants from the Strathnairn community.



#### Jobs for Canberrans’ Crew

ACT Parks and Conservation (PCS) engaged the Jobs for Canberrans’ (JFC) crew as part of the Act Government’s COVID employment scheme. The Trust provided the Crew with an opportunity for engagement in our works plan. They worked on our riparian restoration / African Lovegrass project on the Murrumbidgee River doing planting of overstorey species and brush-cutting of Blackberry growth.



#### SPARK/CIT Horticulture / Conservation and Land Management Program

The Trust partnered with Ginninderry’s SPARK program to provide field work opportunities within the Conservation Corridor. The students engaged in plant identification, monitoring (via field cameras), planting, weed control, habitat restoration works, and water quality monitoring.

#### Bush on the Boundary (BOB) Forum

The Bush on the Boundary forum includes representatives of the Ginninderra Catchment Group, the ACT Conservation Council, the Friends of Grasslands, Act for Bees, the Ginninderra Falls Association and Greening Australia. Throughout the year we engaged with the forum sharing updates on our work program and accepting feedback. The Chair of the Trust also presented to the forum.

#### Pink-tailed Worm-lizard (PW) Monitoring

The Trust engaged community and SPARK students in lizard monitoring which involved rock turning over a period of two weeks. Sightings were recorded and mapped via Survey123 and ArcGIS online.

### **Our Place – Arts/Environment workshops for 7-12 year olds**

In partnership with Sharon Field, internationally renowned botanical artist, the Trust delivered a series of workshops to engage local children in environmental arts workshops. A series of four workshops were delivered to six participants which focussed on seeds, juvenile plants, habitat trees and Aboriginal plant use. Feedback has been very positive and we hope to run something similar in Autumn 2021.



### **Other Community / Non-Government Group Engagement**

*Canberra Ornithologist Group* – conducting surveys at Ginninderra Falls; on the boundary between the development and the Conservation Corridor; and Superb Parrot habitat as part of their ACT wide Superb Parrot surveys.

*Friends of Grasslands* – undertaking Biannual surveys of the grasslands / PW habitat expansion site.

*Greening Australia* – undertaking maintenance of the grassland restoration site. Four times/year across two years.

*Ginninderra Waterwatch* – undertaking water monitoring of Murrumbidgee and Ginninderra Creek confluence sites four to six times / year – access facilitated by the Trust.



*Figure 2 Bush on the Boundary participants visiting the River Corridor*